

Lori Doyle

MapInfo

Desktop Mapping Software

Addendum



Table of Contents

Introduction	1
Corrections and Additions2
MapInfo User's Guide	2
Command Reference	7
New Information, Tips, and Guidelines . 26	
Quick Start: Loading New Data	26
Definitions	27
Installing Data	29
To Add Files to MapInfo	30
Viewing New Files	32
Still Not Seeing What You Expected?	33
Removing Files You Don't Need	35
Saving Your Display and Set Up	35
Changing Map Scale to Metric	38
Changing Area Units of Measurement	40
Printing Street Maps on Color Printers	41
Creating CGM Files for Graphics Transfer	42
Creating Your Own Symbols and Fonts	44
Calculating Distances	53
Converting Coordinates	54
Address Matching With More Than One Mapfile	56
Using MapInfo with DESQview	61
Locating Data With ZIPInfo	65
Installing ZIPInfo	65
Before You Use ZIPInfo	66
Using Your Own Database	66
A ZIPInfo Sampling	67
Using a Street Level Map or a Boundary File	68
Preparing Your Database	69
Using Your Pointfile in MapInfo	70
Geocoding Your Pointfile	71
Displaying Your Points	73
How Do I Use ZIPInfo?	74
Using ZIPInfo With Any Map	74
Saving Your Display	75
Using Symbols in MapInfo	76
Using Symbols as Images	76

Using Symbols for Points	78
Error and Message Codes	81
Index	95

New Information, Tips, and Guidelines

Quick Start: Loading New Data

Overview

This Quick Start is for new MapInfo users. It describes how you can load and view new maps, boundaries, and data in MapInfo.

This document includes:

- Definitions
- Installing Data
- Adding New Files
- Viewing New Files
- Still Not Seeing What You Expected?
- Removing Files You Don't Need
- Saving Your Display and Set Up

Note: MapInfo data files are compressed so that you receive as few diskettes as possible. When you load new data MapInfo automatically expands the files. Each file takes up a certain amount of disk space, and for loading you need three times that amount of space. For example, ZIPInfo files take up 2.2 megabytes, so you need 6.6 megabytes free before you can load ZIPInfo. The extra space is used for processing, and isn't permanently used by the files.

Definitions

It helps to know that MapInfo uses "layers" to display geographic data. (See Figure 1.) There are four layers of files, which you can control, change, add, and remove. These are described below:

1. MAPFILES, which contain items such as streets and highways, as well as railroad tracks, and rivers.

2. BOUNDARY FILES, which usually mark borders, such as state lines, county boundaries, school or voting districts, for example.

3. POINTFILES, which are dBASE compatible files of individual locations. These can be locations of customers, stores, trees, fire hydrants, or whatever you can imagine.

4. IMAGE FILES, which are basically cosmetic items. This layer is where you create and save things like map legends, street labels, a scale of miles, or titles.

The data you bought may belong to one of the following categories:

MAPFILES:

MetroMap™— Digital map data including highways, highway names, streets, street names, water boundaries, railroad tracks, bridges, and address ranges on street segments. MetroMaps also include town boundaries within covered areas. Coverage for each MetroMap corresponds roughly with the urbanized areas. File sizes average around 2Mb, but can be as large as 25Mb for large metropolitan areas.

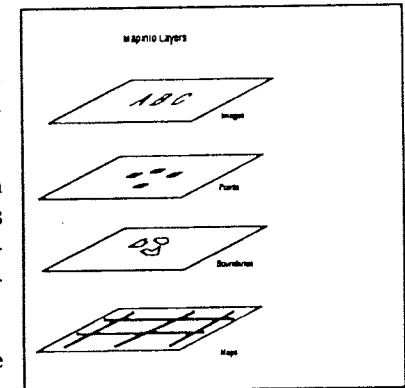


Figure 1.

RuralMap™— Extensive, detailed digital maps with coverage for most of the U.S. including rural areas. Data includes: interstate, state and county highways, highway route numbers, streets, water boundaries, and railroad tracks. RuralMaps include some street names and do not include address ranges.

HighwayMap™ — The HighwayMap includes interstate, state, and toll highways and route numbers.

Boundary Files

MapPack Sampler — Three-digit ZIP Code, telephone area code, and state boundaries, interstate highways, and point locations of 5000 cities across the U.S.

County Boundaries — Boundaries of every county in a state. County boundaries are also available for the entire U.S.

ZIP Codes — Five-digit ZIP Codes for the U.S.

Census Tracts — Census Tract boundaries for urbanized areas.

Block Groups — Subdivisions of Census Tracts.

ADI's, DMA's, and MSA's — Each sold separately. Area of Dominant Influence and Designated Market Areas are Arbitron Rating Company and A.C. Nielson Company's defined areas of TV markets. Metropolitan Statistical Areas are the Census Bureau definitions of metropolitan areas.

MCD's/CCD's — Town boundaries

Pointfiles

CityInfo™ — A database of over 48,000 cities and towns throughout the U.S. supplied in dBASE III format. Use CityInfo to geocode (assign latitude and longitude coordinates) to points in your database based on the city the point is in.

ZIPInfo™— Centroids of five-digit ZIP Codes across the U.S.

With MapInfo you have the ability to put together these layers any way you like. You can create and change any of these layers

as well. For example, you can buy a Mapfile, create your own boundaries, and apply your own database.

Installing Data

To install your data, starting at the MapInfo Main Menu, and **SELECT Load Data From Diskette** (see Figure 2). Follow the instructions that appear on your screen, which ask you to select a disk drive from which to load your data. Use the up and down arrow keys to select different drives.

MapInfo will then ask you to select a directory into which you want to load your data. A default directory path will appear. If it is the directory you want, select Y, if not, select N. If you select N, a text field will appear, in which you can type the appropriate path.

MapInfo will then ask you to insert the data diskette in the drive, and it will load the data. When it is done, MapInfo will ask you if you would like to load more data. Select Yes or No.

MapInfo will display the name of a startup file, created from your data.

When you are ready to use MapInfo, **SELECT Use Startup File** from the Main Menu and enter the name of the directory in which you loaded your data. (Such as C:\MAPINFO for example). Select the file name that MapInfo displayed earlier from the list of names that appears..

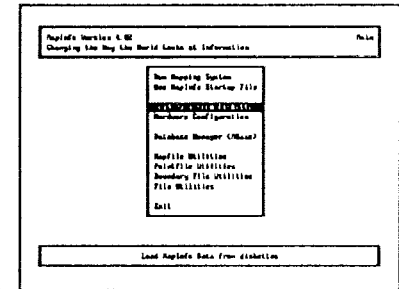


Figure 2. MapInfo's Main Menu